



# City Deal | City Centre Enabling Infrastructure Public Realm

**Derek Dunsire**

PRINCIPAL OFFICER: DRS CITY CENTRE REGENERATION / CITY DEAL



# Strategic Context



**National Planning Framework 3**



**Glasgow Economic Leadership**



**Glasgow City Vision 2012**



**FDI Strategy**



**Proposed Strategic Development Plan 2016**



**Glasgow City Development Plan 2016**



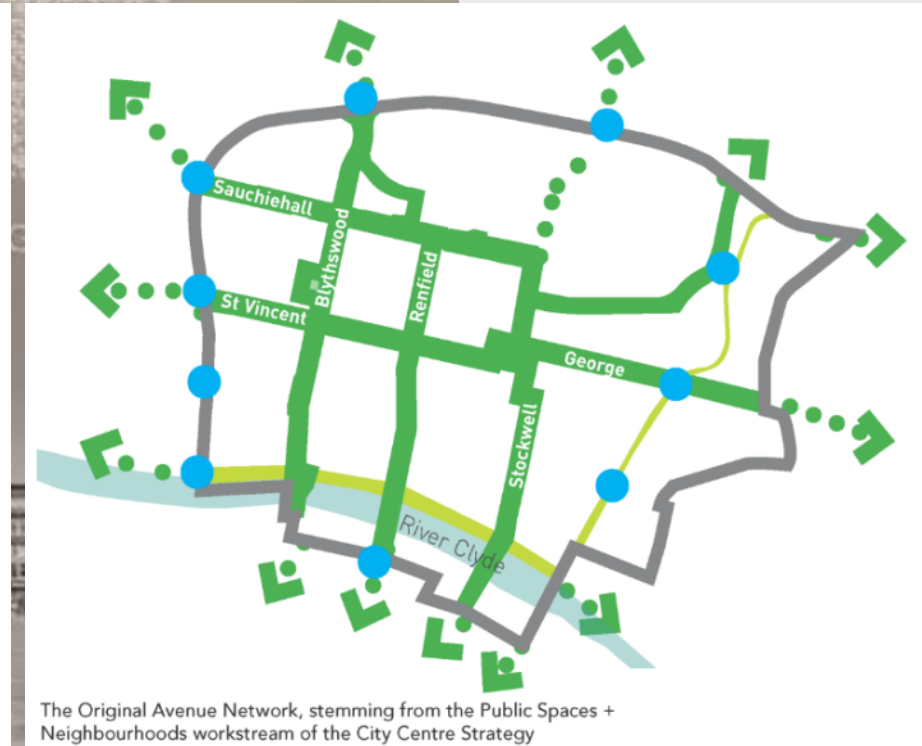
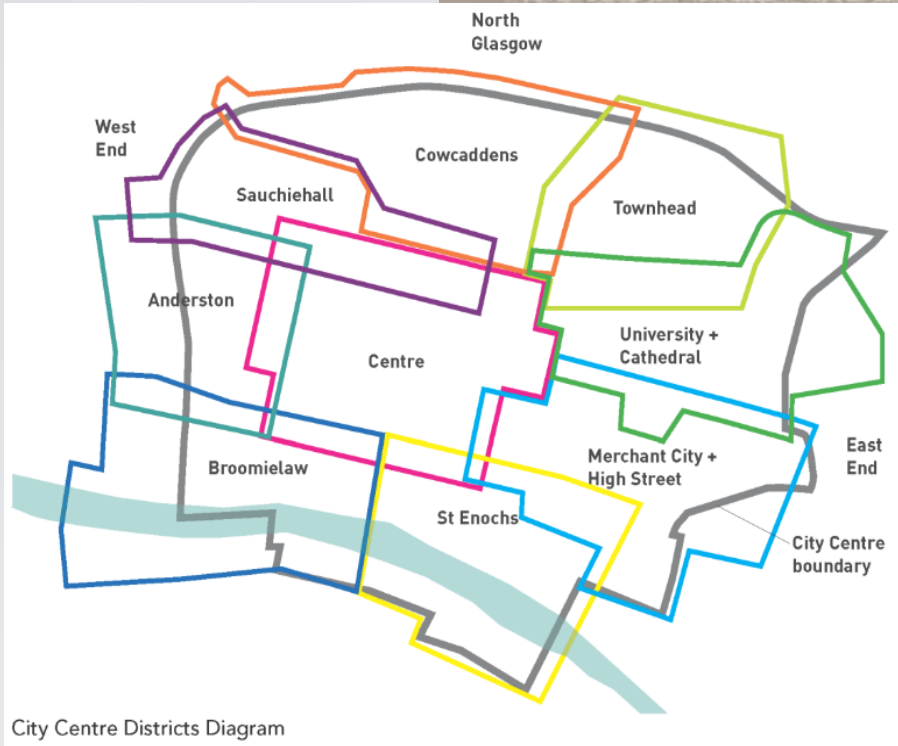
**City Centre Strategy 2014-19**



**City Centre Transport Strategy 2014-24**



# CCS Districts Strategy










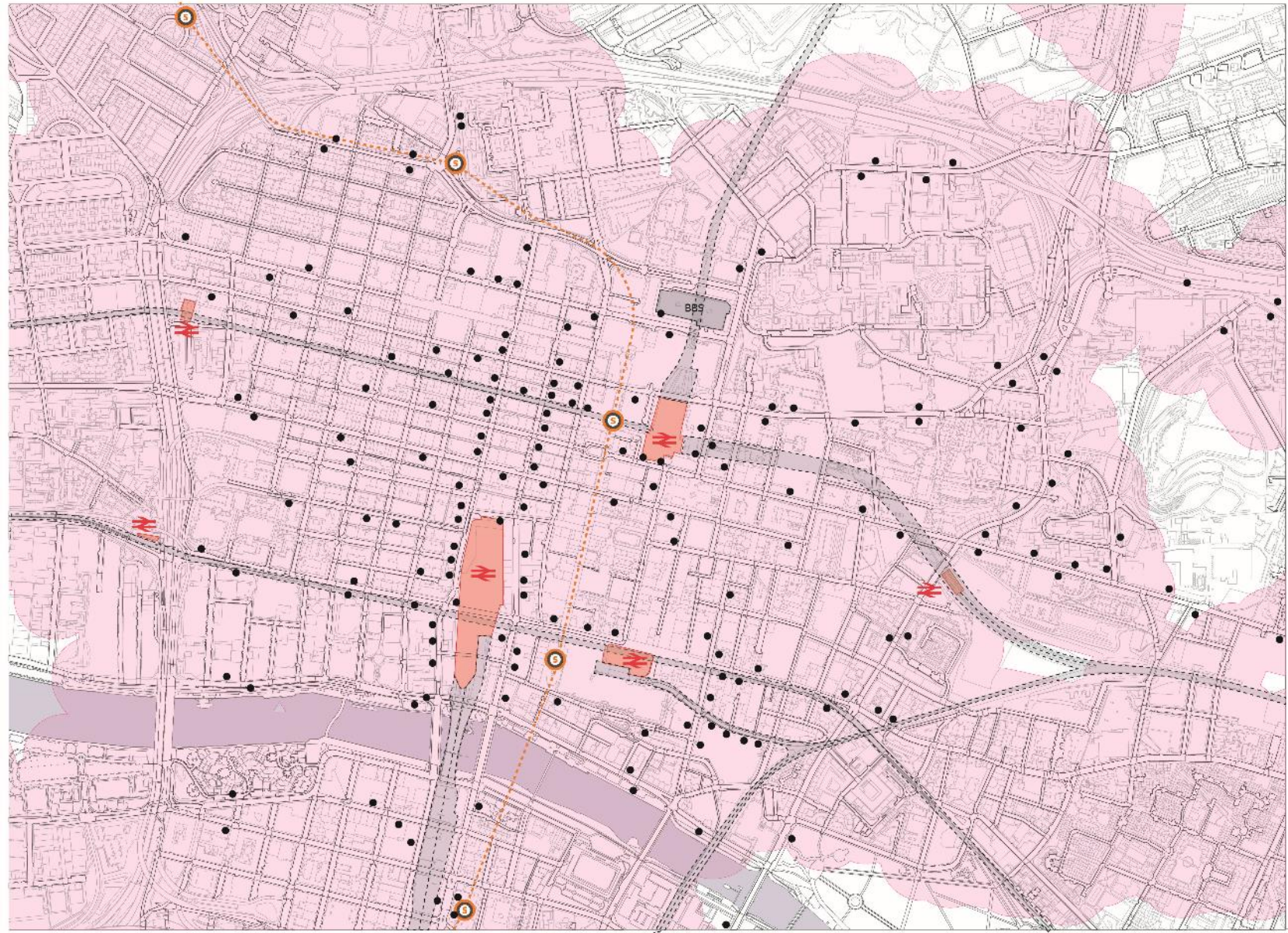
# Project aims and objectives

- Principal Avenues throughout the city centre will introduce *an integrated network of continuous pedestrian and cycle priority routes* to connect key areas and transport nodes and link the city centre with the surrounding neighbourhoods
- Avenues will be used as the binding mechanism to *integrate regeneration and place-making initiatives*
- They will be a *visible and tangible* demonstration of the City's intent to transform the *quality of the environment* and its *readiness for climate change*
- They will incorporate gateways around the city centre to make it *easier and more attractive for pedestrians and cyclists to cross physical barriers*, like the M8
- **Objectives**: improved connectivity, pedestrian-friendly street design, greening, smart infrastructure, surface water management solutions, underground/pop-up services





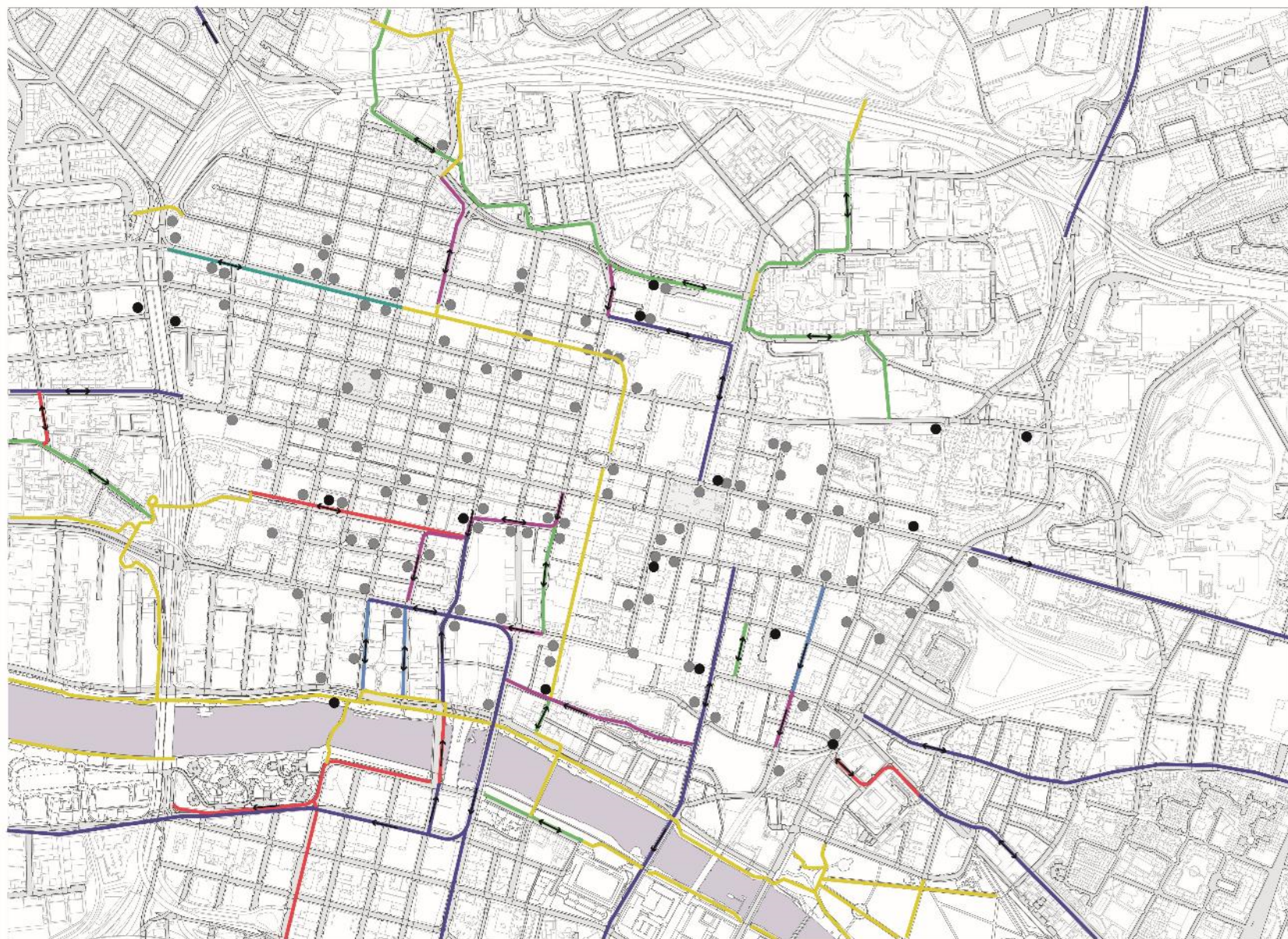
-  Rail Station
-  Bus Station
-  Subway Station
-  Bus Stop
-  Accessibility Rate



## Mapping the City Centre – Travel





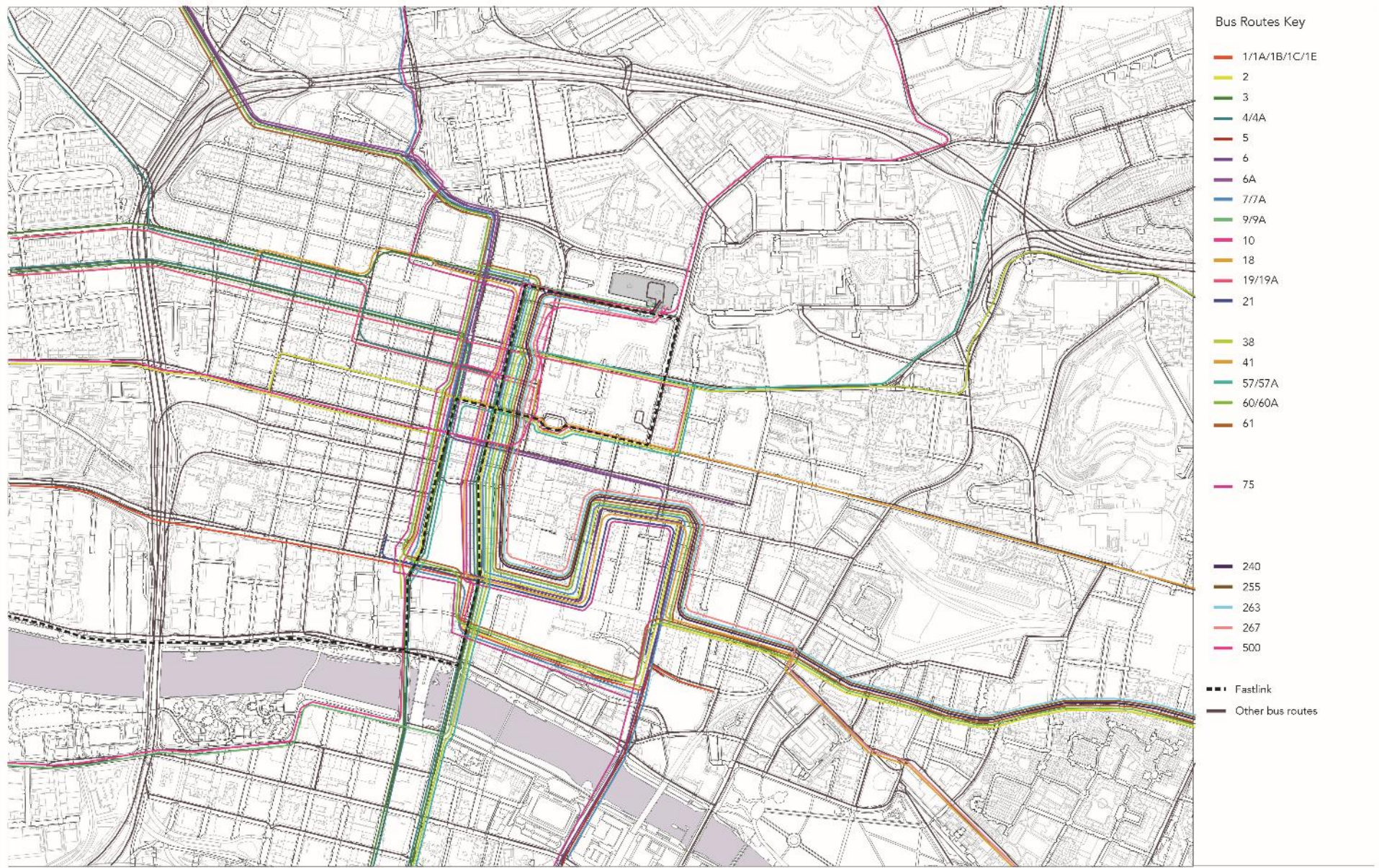


- Segregated cycle lane
- Cycle lane
- Bus and cycle corridor
- Shared on road facility
- Calmed way
- Shared pedestrian/cyclist surface
- Proposed cycle facilities
- ← Single direction
- ↔ Bidirectional
- Cycle hire station
- Cycle parking

## Mapping the City Centre - Cycling





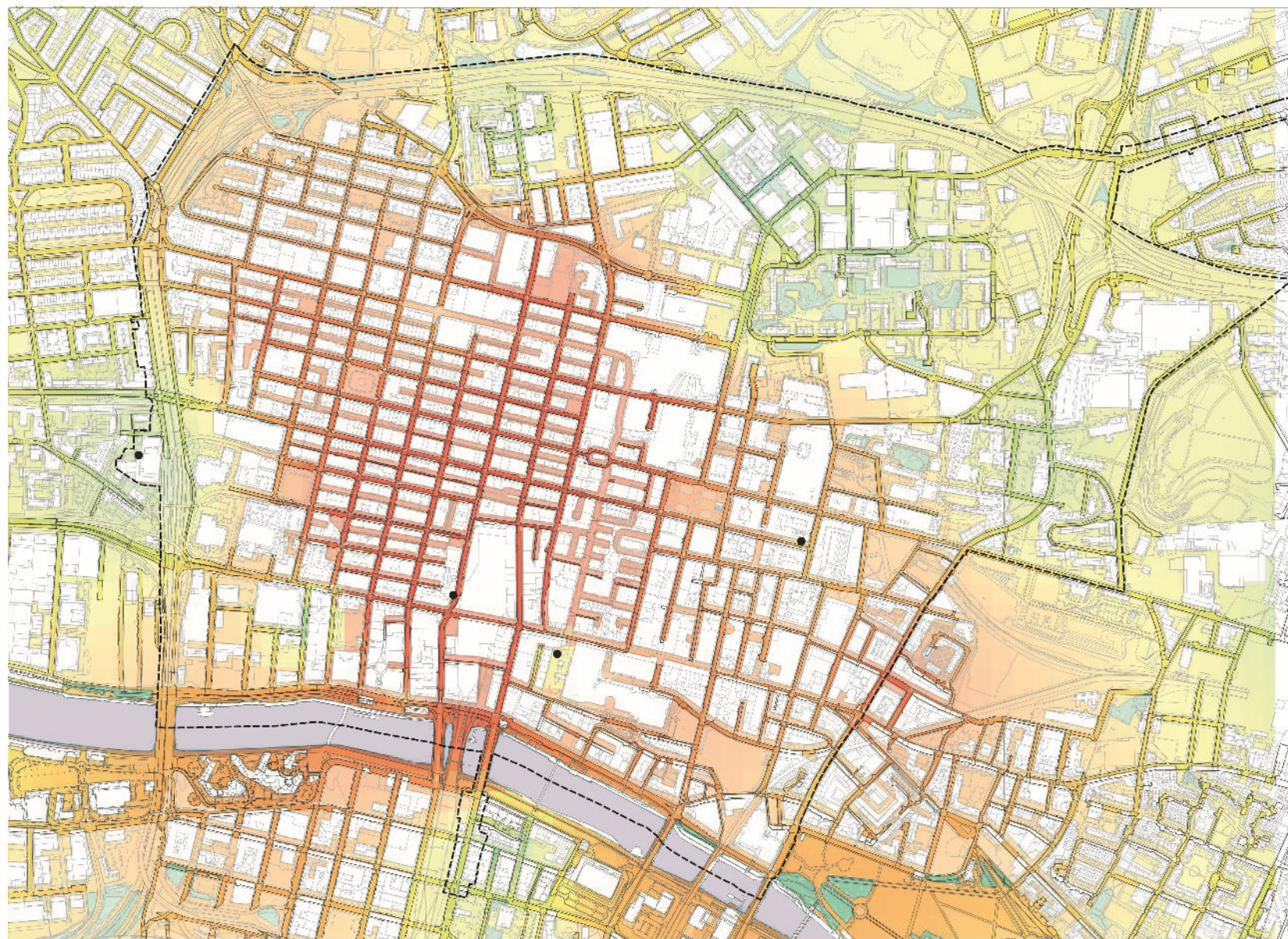


## Mapping the City Centre - Buses





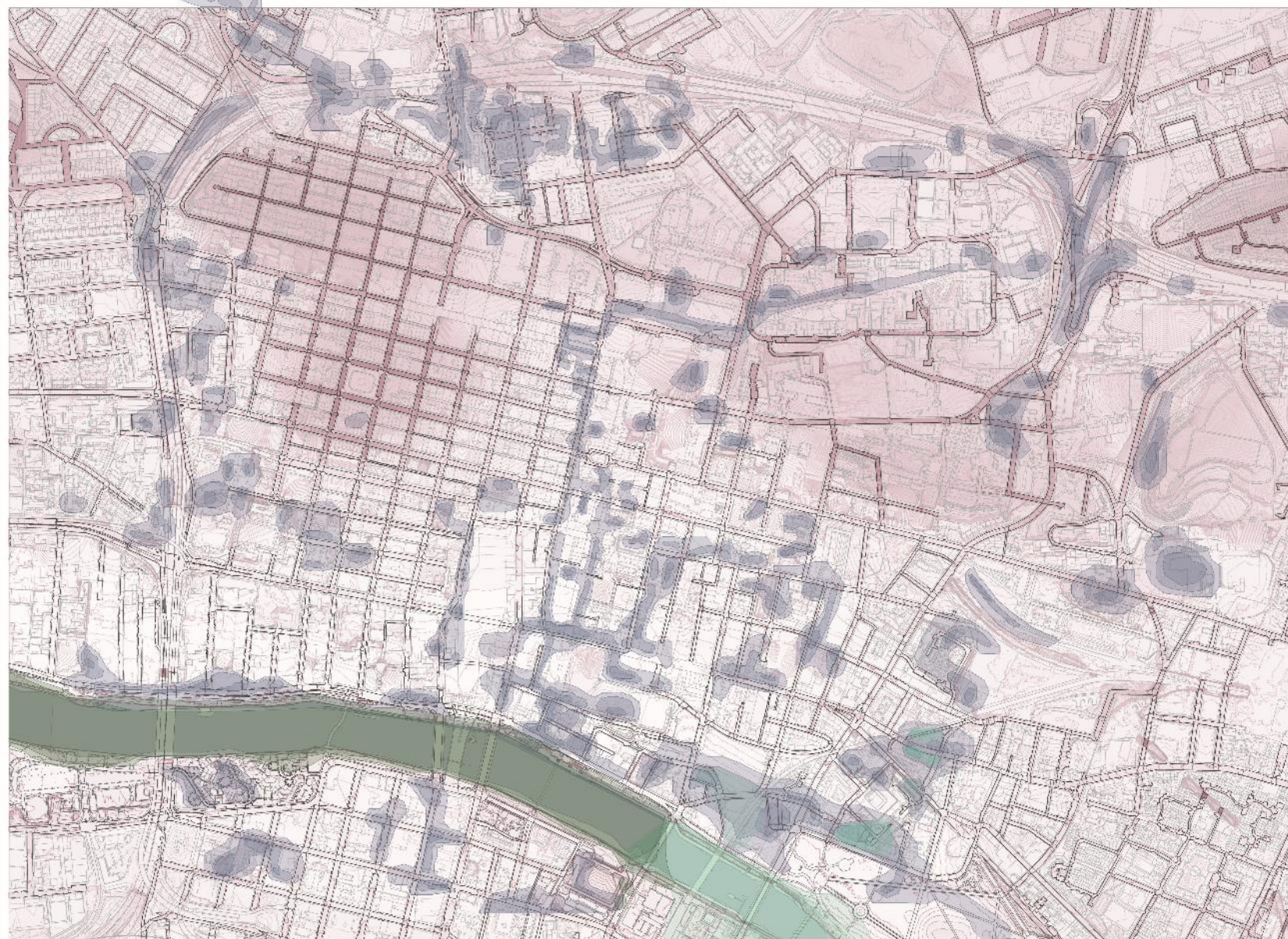
- Air Quality Management Area
- Air Quality Monitoring Station



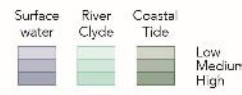
# Mapping the City Centre – Air Quality







Flood Risk  
source: SEPA



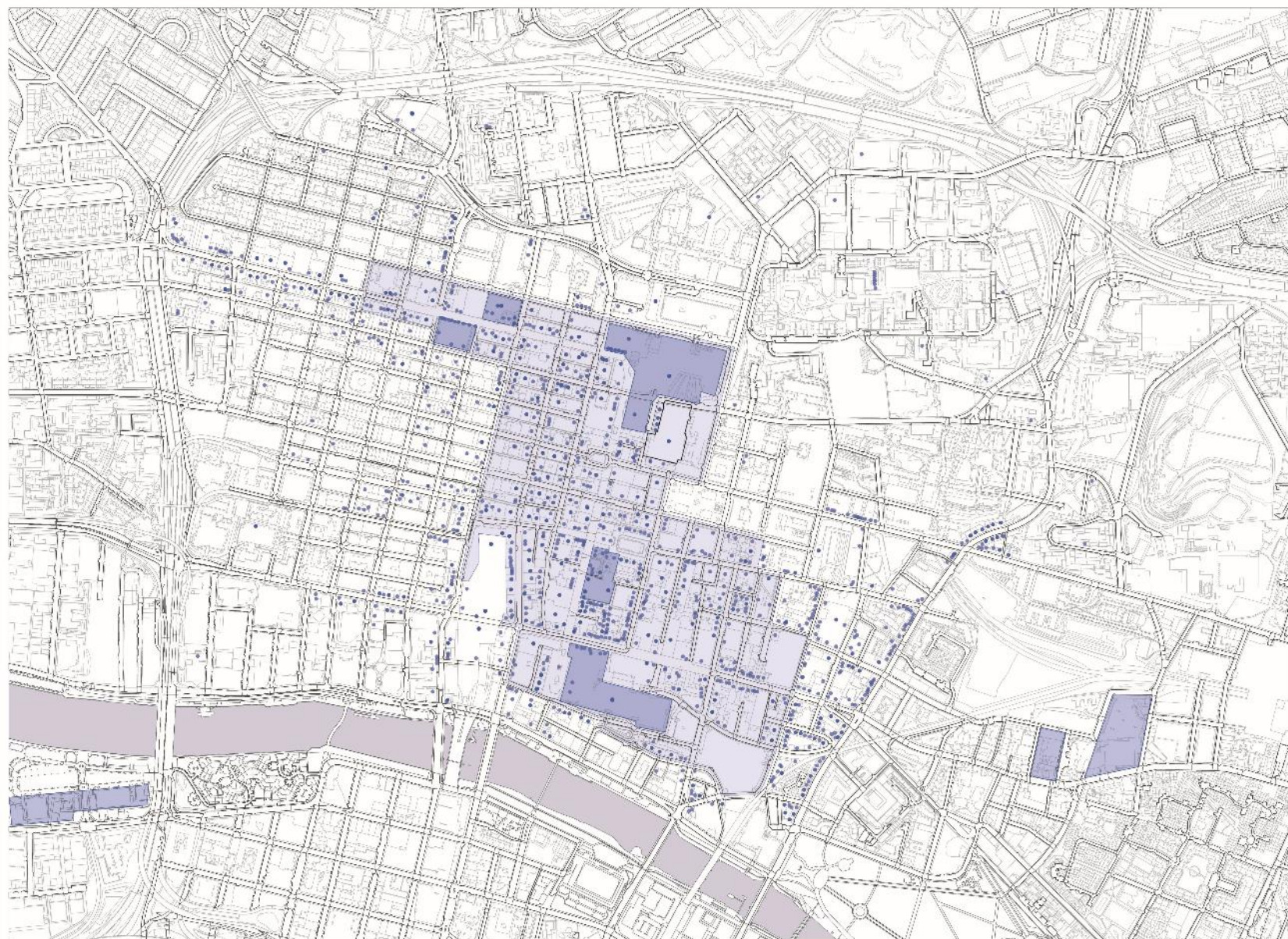
Low: 1 in 1000 years - 0.1% chance a year  
Medium: 1 in 200 years - 0.5% chance a year  
High: 1 in 10 years - 10% chance a year

Topography  
0.5 mt contour lines

# Mapping the City Centre – Flood Risk





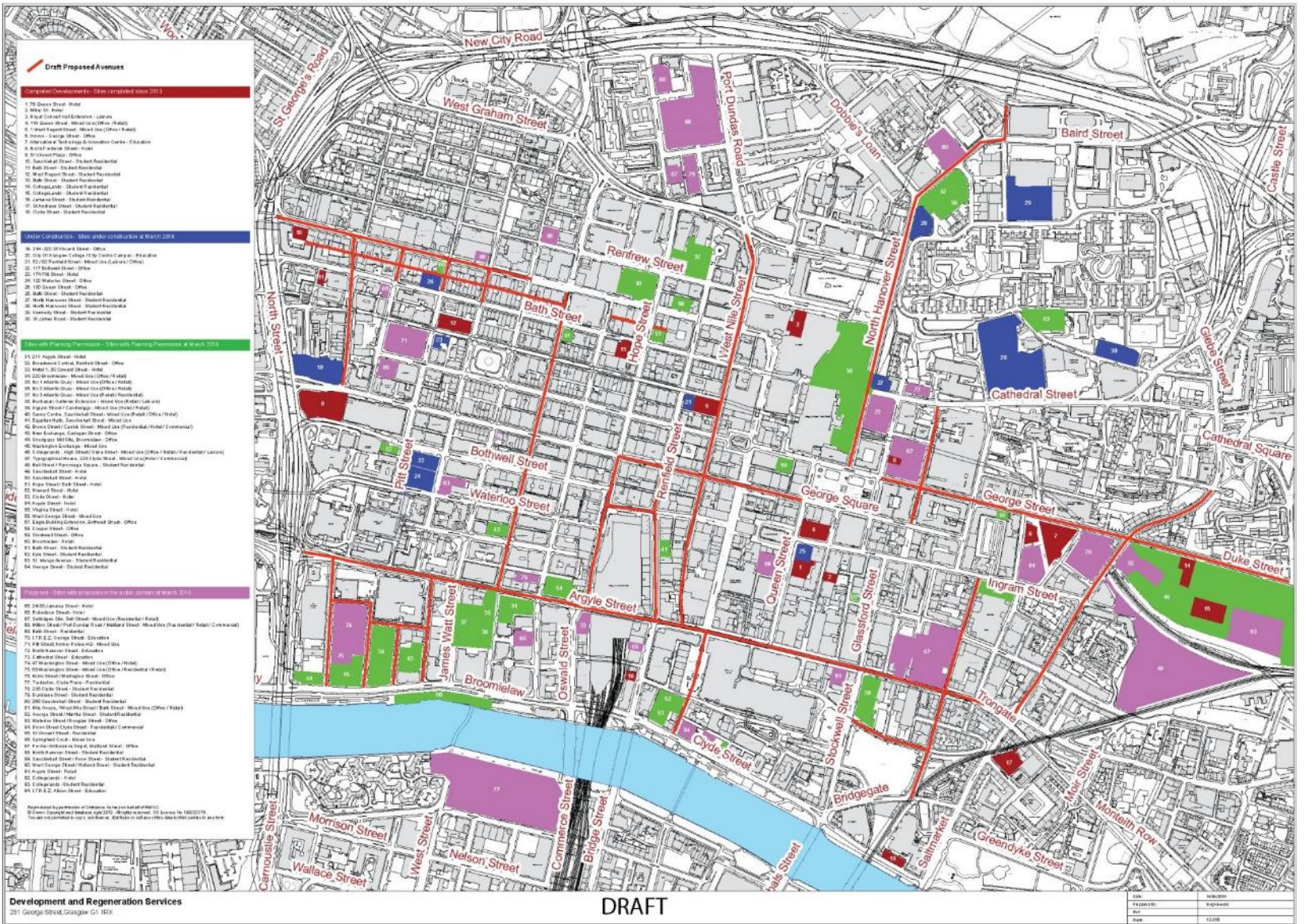


- Retail Spaces
- Shopping Center  
Department Store  
Big retail spaces
  - Small retail spaces
  - Principal retail area

## Mapping the City Centre – Retail Activity







# Mapping the City Centre – Development Activity





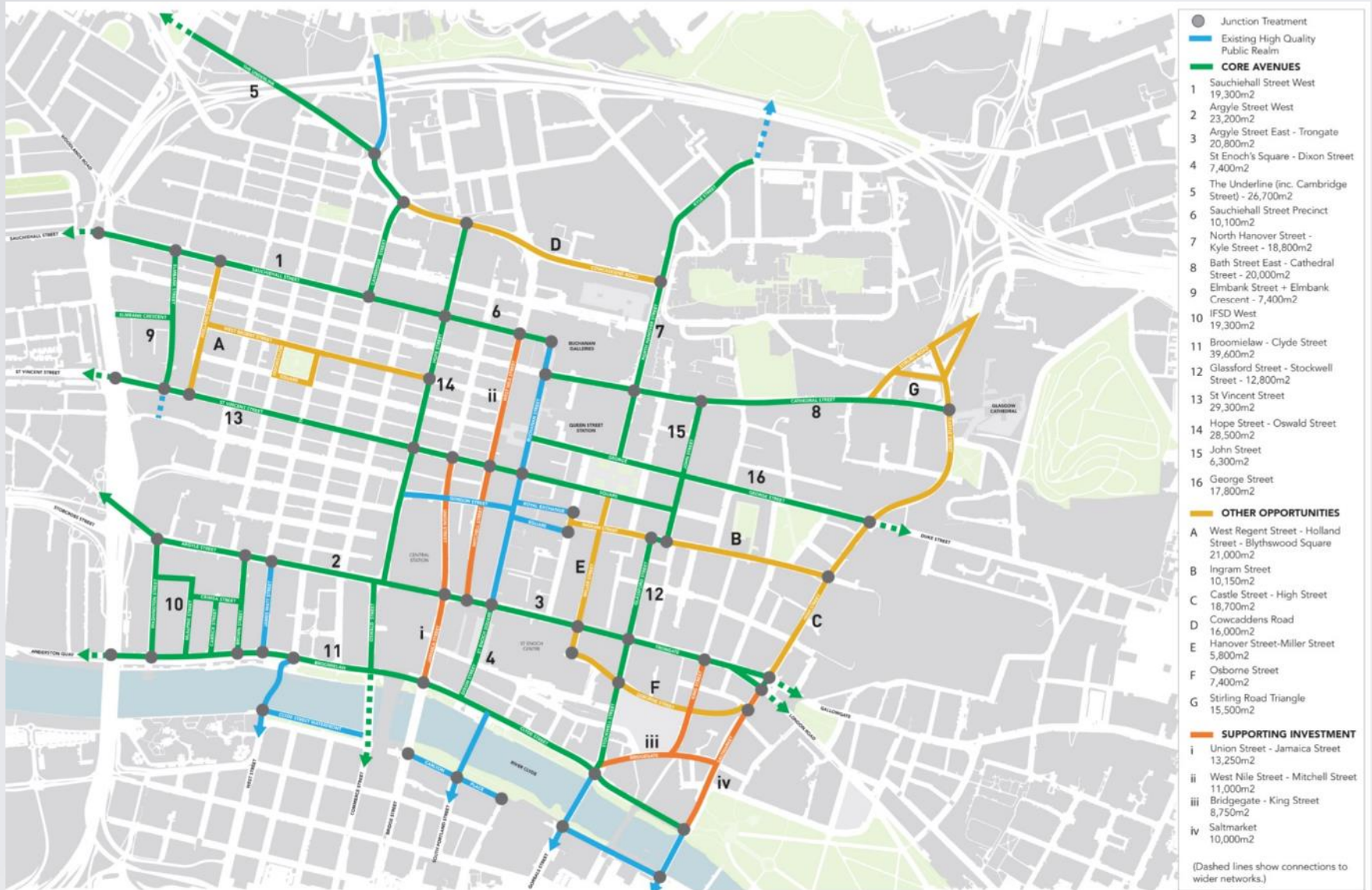
# Project scope: Avenues

- Delivery of 16 street public realm interventions (estimated 10 contracts) plus the ERDF ISL project
- 3-stage Options Appraisal:
  - Strategic: type of intervention
  - Outline: selected streets and spaces; design principles
  - Final: detailed and technical Avenue design
- £115m estimated cost; £240m GVA uplift over 20 years





# EIIPR route map





# Design Elements & Deliverables

Direct Benefits	Quantum
Public Realm (New & Enhanced)	184,380sqm
Blue/Green Infrastructure – Rain Gardens	6,930sqm
Road Network (Enhanced)	12,810m
Walk way (New & Enhanced)	14,435m
Cycle Track (New & Enhanced)	9,315m
Junction Upgrades	50
Green Infrastructure – Street Trees	250
Construction jobs	1,698





# Project scope: Block A

- Sauchiehall Street Avenue (Charing Cross to Rose Street)
- Phase 1 delivery:
  - Argyle Street (Junction 16 to Trongate), St Enoch Square, Dixon Street
  - Underline and Sauchiehall Street precinct (Rose Street to Buchanan Street)
  - North Hanover Street / Kyle Street
  - Bath Street East / Cathedral Street





# Programme

- OBC City Centre EIIPR – Dec 2016
- FBC ICT/ Lighting – December 2017
- FBC SSA – June 2017
- Sauchiehall Street Avenue Phase1 – Construction start July 2017 / completion November 2018
- Procurement for SSA Phase2, Underline, North Hanover Street and Argyle Street
- FBC SSA Precinct – October 2017
- FBC Underline – February 2018
- FBC North Hanover Street – June 2018
- FBC Argyle St West – June 2018





# Key Risks

- Utility Diversions
- Delivery of shared vision
- Procurement Constraints – Construction, Materials
- Programming conflicts with other development
- Delays with proposed Traffic Regulation Orders
- Cost Increases
- Programme Slippage







## Extent of Works

Sauchiehall Street (Charing Cross to Rose Street)

Elmbank Street, Holland Street, Pitt Street and Douglas Street





# Project summary

- Sauchiehall Street Avenue (Charing Cross to Rose Street):
  - Two lane carriageway with raised tables / single-surface road junctions
  - Segregated two way cycle lane and de-cluttered footways
  - Improved street furniture, bus shelters and street lighting
  - Avenue of trees – 27 trees, 5 species
- Elmbank Street, Holland Street, Pitt Street and Douglas Street





# Sauchiehall Street looking west - before



# Sauchiehall Street looking west - after





# Sauchiehall Street looking east - before



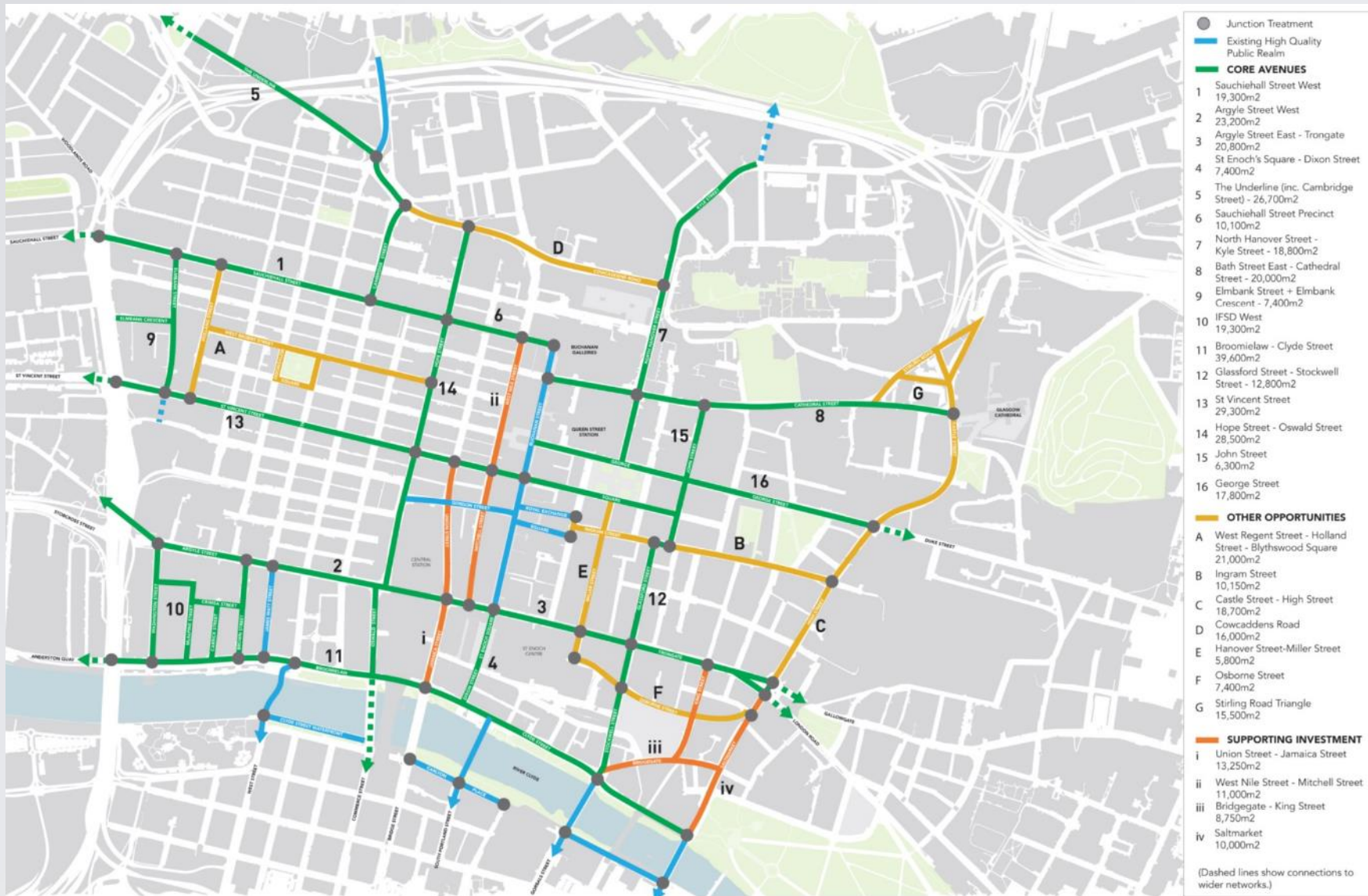


# Sauchiehall Street looking east - after





# EIIPR route map





# North Hanover Street looking north





# Argyle Street looking east at Buchanan Street



# Questions?

[derek.dunsire@glasgow.gov.uk](mailto:derek.dunsire@glasgow.gov.uk)

0141 287 0148

